

Performance Network

The Performance Network offers more choice for people living in the North County area of San Diego. In addition to our regional partners, we offer affordable access to Sharp's award-winning medical groups, all dedicated to meeting your health care needs.¹



1,700+ Doctors



13 Hospitals



7 Medical Groups



40 Urgent Care Centers



450+ Pharmacies



15 MinuteClinics®



Plan medical groups

A plan medical group (PMG) is a designated group of doctors, hospitals, specialty care and urgent care centers associated with a network. It is important to keep in mind that referrals and prior authorizations do not transfer between PMGs. You have access to only one PMG at a time. Your PMG will be listed on the front of your member ID card.²

► Sharp Rees-Stealy Medical Group

This PMG includes more than 500 primary care physicians and specialists. Admitting hospitals are Sharp HealthCare facilities and Rady Children's Hospital. Sharp Rees-Stealy Medical Group physicians serve:

- Carmel Valley
- Chula Vista
- Del Mar
- Downtown San Diego
- El Cajon
- Frost Street / Frost Street North
- Genesee
- La Mesa / La Mesa West
- Mira Mesa
- Mt. Helix
- Murphy Canyon
- Otay Ranch
- Point Loma
- Rancho Bernardo
- San Carlos
- San Diego
- Scripps Ranch
- Sorrento Mesa

Find a doctor

Visit sharphealthplan.com and click "Find a doctor" to see if your current doctor is in one of the listed plan medical groups, or to find one that fits your needs.

¹ The data shown here reflects the Performance Network as of March 31, 2019. Coverage area includes but is not limited to the locations in this document. Service area does not include all San Diego County ZIP codes. Location of employer group headquarters must be within the Performance Network licensed service area.

² Not all medical groups and independent physicians have access to all hospitals or urgent care centers. Please contact Customer Care at 1-800-359-2002 for more information.

▶ Sharp Community Medical Group (SCMG)

This PMG includes more than 1,100 primary care physicians and specialists. This medical group includes SCMG, SCMG Arch Health Medical Group, SCMG Graybill Medical Group, SCMG Graybill Temecula Medical Group, SCMG Inland North, and SharpCare. Admitting hospitals are Sharp HealthCare facilities, Rady Children's Hospital and Palomar Medical Centers. SCMG physicians serve:

- Alpine
- Campo
- Carlsbad
- Chula Vista
- Clairemont
- College Area
- Coronado
- Del Cerro
- Downtown San Diego
- East San Diego
- El Cajon
- Escondido
- Fallbrook
- Hillcrest
- Imperial Beach
- Kearny Mesa
- La Jolla
- La Mesa
- Lakeside
- Mira Mesa
- Mission Valley
- Murietta
- National City
- Oceanside
- Point Loma
- Poway
- Ramona
- San Diego
- San Marcos
- Santee
- Spring Valley
- Temecula
- University City
- Valley Center
- Vista

▶ Rady Children's Health Network / Children's Physicians Medical Group (CPMG)

This PMG includes more than 400 primary care physicians and specialists. The admitting hospital is Rady Children's Hospital. Rady Children's Health Network / CPMG physicians serve:

- Allied Gardens
- Carlsbad
- Chula Vista
- Clairemont
- Del Mar Heights
- Downtown San Diego
- Eastlake
- East San Diego
- El Cajon
- Encinitas
- Escondido
- Hillcrest
- Kearny Mesa
- La Jolla
- La Mesa
- Linda Vista
- Menifee
- Mira Mesa
- Murrieta
- National City
- Oceanside
- Point Loma
- Poway
- Rancho Bernardo
- San Diego
- San Marcos
- Scripps Ranch
- Temecula
- University City
- Wildomar





Hospitals

The Performance Network offers access to a broad selection of hospitals in the region, including:

Sharp hospitals³

- Sharp Chula Vista Medical Center
- Sharp Coronado Hospital and Healthcare Center
- Sharp Grossmont Hospital
- Sharp Mary Birch Hospital for Women & Newborns
- Sharp Memorial Hospital

Additional hospitals

- Inland Valley Medical Center
- Palomar Medical Center Escondido
- Palomar Medical Center Poway
- Rady Children's Hospital (2 locations)
- Rancho Springs Medical Center
- Temecula Valley Hospital
- Tri-City Medical Center



Pharmacies

Visit sharphealthplan.com/pharmacy and click "Find a pharmacy" to locate a pharmacy that fits your needs. Our members have access to more than 450 local and major national pharmacies, including:

- Albertsons® / Sav-on®
- Costco®
- CVS Pharmacy® locations, including those at Target®
- Ralphs®
- Rite Aid®
- Sharp Rees-Stealy Pharmacy
- Vons® / Pavillions®
- Walgreens®
- Walmart®
- Independently contracted neighborhood pharmacies

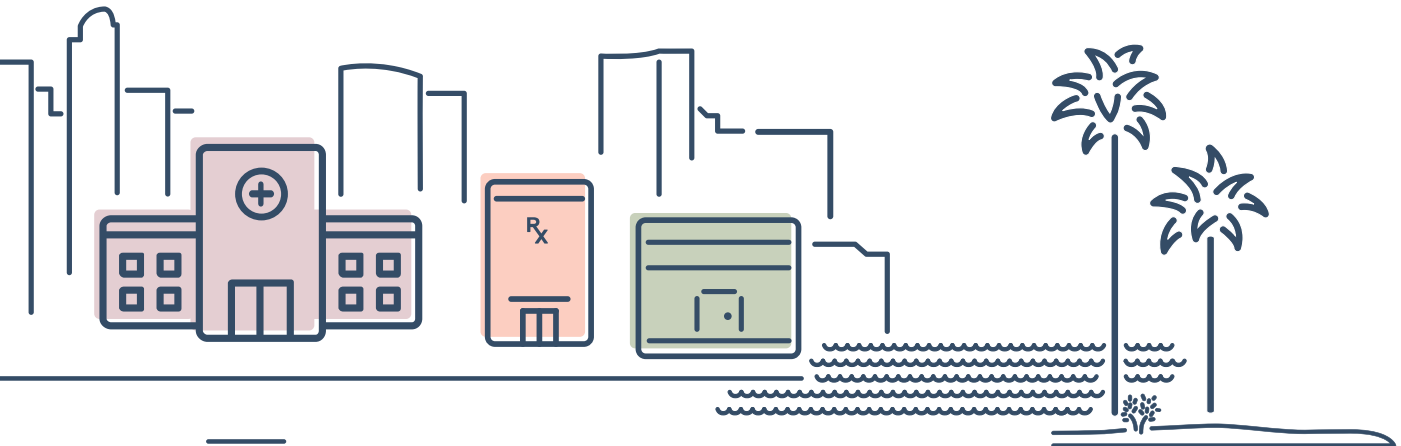


Urgent care centers

Visit sharphealthplan.com/urgentcare to search among the 40 urgent care centers affiliated with the Performance Network.

Consider us your personal health care assistant®

If you have any questions, please contact Customer Care by email at customer.service@sharp.com or by phone at 1-800-359-2002 from 8 a.m. - 6 p.m., Monday - Friday. Hours may vary during holidays.



Elite-rated health care

Sharp Health Plan has a family of health care providers close to where you live and work. In addition to our regional partners, our network includes Sharp Rees-Stealy Medical Group and Sharp Community Medical Group, both awarded "Elite" status, the highest possible rating for Standards of Excellence¹.



1,200+ Doctors



10 Hospitals



2 Medical Groups



30+ Urgent Care Centers



450+ Pharmacies



15 MinuteClinics[®]

Premier Network

Premier is a smaller, more select network offering the most value and covering a subset of San Diego County. With more than 1,200 physicians, the Premier Network offers access to Sharp HealthCare physicians and medical groups conveniently located in central San Diego County.²



Plan medical groups

A plan medical group (PMG) is a designated group of doctors, hospitals, specialty care and urgent care centers associated with a network. It is important to keep in mind that referrals and prior authorizations do not transfer between PMGs. You have access to only one PMG at a time. Your PMG will be listed on the front of your member ID card.³

Find a doctor

Visit sharphealthplan.com and click "Find a doctor" to see if your current doctor is in one of the listed plan medical groups, or to find one that fits your needs.

¹ Recipients of "Elite" status in the 2018 national Standards of Excellence™ survey by America's Physician Groups.

² The data shown here reflects the Premier Network as of March 31, 2019. Coverage area includes but is not limited to the locations in this document. Service area does not include all San Diego County ZIP codes. Employer group headquarters location must be within the Premier service area. To see if your business qualifies for this product at the preferred premium rates, please ensure that your company is headquartered within the Premier service area.

³ Not all medical groups and independent physicians have access to all hospitals or urgent care centers. Please contact Customer Care at 1-800-359-2002 for more information.

▶ Sharp Rees-Stealy Medical Group

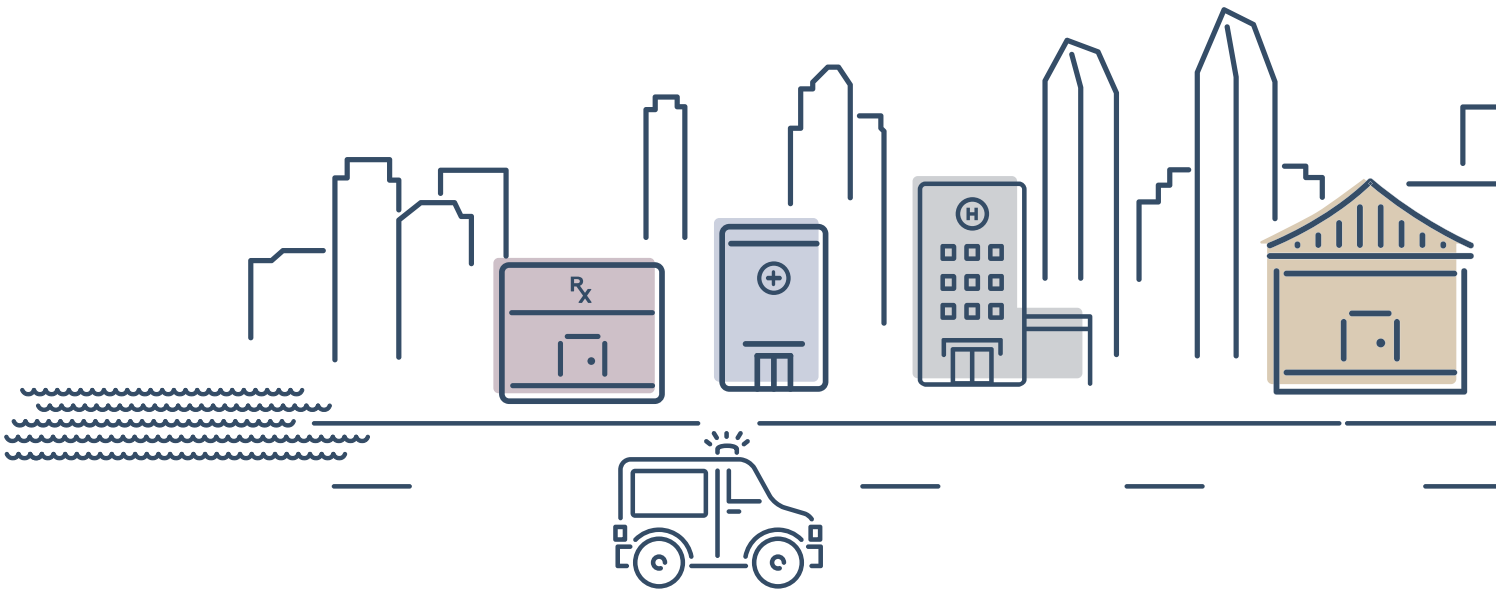
This PMG includes more than 500 primary care physicians and specialists. Admitting hospitals are Sharp HealthCare facilities and Rady Children's Hospital. Sharp Rees-Stealy Medical Group physicians serve:

- Carmel Valley
- Chula Vista
- Del Mar
- Downtown San Diego
- El Cajon
- Frost Street / Frost Street North
- Genesee
- La Mesa / La Mesa West
- Mira Mesa
- Mt. Helix
- Murphy Canyon
- Otay Ranch
- Point Loma
- Rancho Bernardo
- San Carlos
- San Diego
- Scripps Ranch
- Sorrento Mesa

▶ Sharp Community Medical Group (SCMG)

This PMG includes more than 1,000 primary care physicians and specialists. Admitting hospitals are Sharp HealthCare facilities and Rady Children's Hospital. SCMG physicians serve:

- Alpine
- Campo
- Chula Vista
- Clairemont
- College Area
- Coronado
- Del Cerro
- Downtown San Diego
- East San Diego
- El Cajon
- Hillcrest
- Imperial Beach
- Kearny Mesa
- La Jolla
- La Mesa
- Lakeside
- Mira Mesa
- Mission Valley
- National City
- Point Loma
- Poway
- San Diego
- Spring Valley
- Santee
- University City





Hospitals

The Premier Network offers you access to a broad selection of hospitals in the region, including:

Sharp hospitals⁴

- Sharp Chula Vista Medical Center
- Sharp Coronado Hospital and Healthcare Center
- Sharp Grossmont Hospital
- Sharp Mary Birch Hospital for Women & Newborns
- Sharp Memorial Hospital

Additional hospitals

- Palomar Medical Center Escondido
- Palomar Medical Center Poway
- Rady Children's Hospital (2 locations)
- Temecula Valley Hospital



Pharmacies

Visit sharphealthplan.com/pharmacy and click "Find a pharmacy" to locate a pharmacy that fits your needs. Our members have access to hundreds of local and major national pharmacies, including:

- Albertsons® / Sav-on®
- Costco®
- CVS Pharmacy® locations, including those at Target®
- Ralphs®
- Rite Aid®
- Sharp Rees-Stealy Pharmacy
- Vons® / Safeway®
- Walgreens®
- Walmart®
- Independently contracted neighborhood pharmacies



Urgent care centers

Visit sharphealthplan.com/urgentcare to search among the 30+ urgent care centers affiliated with the Premier Network.

Consider us your personal health care assistant[®]

If you have any questions, please contact Customer Care by email at customer.service@sharp.com or by phone at 1-800-359-2002 from 8 a.m. – 6 p.m., Monday through Friday.

